

75p February 2025

# connected

*The Parish Magazine of St Wilfrid's Brayton  
including news from the Local Ecumenical  
Partnership at the Church of St Francis  
Thorpe Willoughby, and the Methodist  
churches at Brayton and Burn*



[www.StWilfridsParish.com](http://www.StWilfridsParish.com)

# Welcome

## to the February 2025 edition of *Connected*

The Christmas and New Year break caused me to play catch-up this month, and I have included some articles that would ordinarily have been published in the January *Connected*.

I am indebted to Margaret Seager for her update on the length of son Robert's hair, and also to Ruth Breeze for the Parochial Church Council update. Jan Tetley provided some

excellent images from the recent Card Making Morning at St Francis, and roving reporter Leita Hunter travelled to Whistler in Canada just to wish us all a Happy New Year. Who knew that the *Connected* budget extended to travel abroad? Not me, but expect to receive an article from me adjacent to a swimming pool on a Greek Island shortly.

Printed copies of *Connected* cost £5 a year, or you can pick up a single copy for 75p from any of the Churches mentioned within these

pages. Subscriptions run from June each year. They will be collected by whoever delivers your copy of the magazine.

*Connected* may be downloaded free from the *A Church Near You* websites.

Articles for *Connected* are always gratefully received, by the 11<sup>th</sup> of the month please.

**John Clarke** ✝  
01757 708646  
js\_clarke@btinternet.com

---

## Inside This Month

#TheParishThisMonth.....	3	Bah, Humbug! .....	17
Dear Friends .....	7	A New Year.....	18
Cold Snap.....	8	Methodist Clergy .....	19
This Way .....	9	From the Registers .....	19
Jesus was a Carpenter .....	9	St Wilfrid's Clergy.....	20
Card Making.....	10	St Francis' Clergy .....	20
Bird Boxes .....	10	Service Roster .....	21
Disturb Us Lord.....	11	The Directory.....	22
Hair Today .....	12	St Wilfrid's Notices .....	24
What's The Big Idea?.....	14	St Francis' Notices .....	24
Reflecting Faith .....	15	#TheParishThisMonth (Continued).....	25
PCC News.....	16		

---

**"Salt is like love; it can heal, purify preserve and enrich, but it's useless if it's not sprinkled around. The truth is that all of life is tasteless without love."**

**UCB Word for Today**

Cover image - a blue tit taking advantage of Mrs Clarke's bird table in the snow

#TheParishThis Month



Thank you to Margaret Seager for this picture of St Wilfrid's in the snow.



We also received this image of Whistler in Canada from Leita Hunter to wish us a Happy New Year!



Not what is usually heard from the pulpit! Chris Cade as Ebenezer Scrooge at St Wilfrid's. Ebenezer's homily explored the past, present and future, family, greed, generosity and forgiveness, Christmas and tradition, social dissatisfaction and the poor laws in Victorian Britain



Chris as the ghost of  
Christmas Present

# Dear Friends

## Love in Action!

'Dear children, let us not love with words or speech but with actions and in truth.' (1 John 3:18).

The writer Gary Chapman\* describes how love can be expressed in 5 different 'languages': words of encouragement, quality time, gifts, acts of service and touch. Do you have a preferred language of love? As we think about St Valentine during this month, let's consider how God's love language is expressed in the word agape. This is exclusively found in the New Testament and is uniquely defined by Jesus: 'This is how we know what love is: Jesus Christ laid down His life for us. And we ought to lay down our lives for our brothers and sisters.' (1 John 3:16). Jesus' giving of His life on the cross provides the model for how we can demonstrate God's love in our relationships with others.

It is self-giving: are we ready to put the other person first, as Jesus did when He died for us in our place. Are we generous with our time, words, money and service, whatever the cost?

It takes the initiative: are we ready to show love to those



who don't deserve it or who we find hard to love? Do we have eyes of compassion to see their needs and a heart to love and serve them?

It is intentional: are we ready to get close to those in need around us, irrespective of the time we have or how we feel?

The story is told of Jesus asking a little child, 'how much

do you love me?' The child replied 'lots and lots and lots!' Then they asked Jesus how much He loved them. Jesus stretched out His arms wide and said 'I love you this much', as they nailed Him to a cross.

**Canon Paul Hardingham** †

\*Gary Chapman became famous following the success of his "Five Love Languages" published first in his book *The Five Love Languages: How to Express Heartfelt Commitment to Your Mate* (1992).

Chapman based his theory that people give and receive love through one of five "languages": words

of affirmation, quality time, receiving gifts, acts of service, and physical touch.

Chapman postulated that each language is enjoyed to different degrees by everyone, but an individual will usually favour one primary language. This concept came from Chapman's experiences as

a pastor in Calvary Baptist Church in Winston-Salem, North Carolina, advising couples on their relationships. His conclusions have no scientific basis, and recent research seeking to evaluate Chapman's conclusions have had mixed results.

# Brrrrrrrr!

Well, the cold weather of winter 2025 appears to have been and gone, and the outlook is for much warmer weather. Wasn't it terrible? Three days of ice and snow! Mrs Clarke created a nest for herself under a pile of duvets in the lounge, and proceeded to demolish her extensive stash of Christmas chocolates and left over mince pies. Meanwhile I was sent out with a shovel to keep the front path clear...

How different from seventy years ago, when from early February 1955 and well into March, a Big Freeze took place in Britain. Deep snow and freezing temperatures caused havoc, with many places cut off. The RAF dropped food and medical supplies to affected areas, while thousands of sheep died from exposure.

Although the winters of 1947 and 1963 have attracted more publicity, 1955 saw severe weather in most parts of Britain, as well as in other parts of Europe and North America.

Snow fell in many areas of the UK from 11<sup>th</sup> February onwards, with night frosts gradually worsening and blizzards developing over the north of Scotland, where the RAF scrambled to do several rescues: in Caithness the response by emergency services was known as Operation Snowdrop. An exhausting search for a postman from Thurso, who went missing in the deep snow, eventually led to his being found at a remote farm where he had sought refuge.

Several snowploughs were stranded, and the heavy snow spread gradually south, reaching as far as the Scillies



Image by John Clarke

and the Channel Islands. In North Norfolk there were 10ft drifts on the coast road, and Lancashire had its worst storm for 14 years. Devon, Cornwall and the Peak District had similar experiences.

More than 70 roads in Britain were blocked by snow, according to the Automobile Association, and hundreds of vehicles were abandoned in snowdrifts. Many parts of the country were cut off from essential supplies, and rail travel was disrupted. Church attendance was also hit, of course.

Temperatures in some places fell below 28F (-3C) – the lowest for 30 years in 1955, and February's record UK minimum was set. That year also experienced the last May snowfall of the century, causing havoc with that year's County Cricket schedule, but despite all that, there was plenty of sunshine, and as a total contrast, there was a drought and a heatwave the following summer.

**John Clarke** ✝  
With help from Parish Pump



# This Way!

## How do you keep your life going in the right direction?

'Do not let this Book of the Law depart from your mouth; meditate on it day and night, be careful to do everything written in it. Then you will be ... successful.' Joshua 1.8

Any flying instructor will tell you that periodically all aeroplanes need to be 'trimmed' or 'balanced in flight'. After flying through storms and hitting air pockets, the plane's instruments need to be readjusted. That's true of our attitudes too. The air currents of life can 'knock you out of line' and keep you from reaching your destiny. 'Unexpected weather' like sickness, unemployment, divorce, death and disappointment can drive

you off course.

In other words, your attitude needs to be constantly checked and adjusted. Have you checked yours lately? What are you encountering that calls for an attitude change? How are you handling it? Are you adjusting or resisting? So long as you live, you'll always need to be 'trimmed and balanced'.

The most important thing that affects your attitude in life is your faith, and that grows only as you live in God's Word. That's why God told Joshua to read the Word, speak the Word and obey the Word if he wanted to succeed.

Try the 3 x 5 Technique! Each week, write out one faith building scripture on a 3 x 5 card. Carry it with you

wherever you go and memorise it. In one year, you'll know 52 new scriptures, and more importantly, your attitudes will be in line with God's Word, your faith will be strengthened, and your life will keep moving in the right direction.

**From UCB**  
**The Word for Today** †



# Jesus the Carpenter

## What you have in common with a woodcarving

Woodcarving isn't as straightforward as it seems. You don't begin with a block of wood; you begin with a piece of paper. The first step is to draw a plan of what you want to carve, and only when you've got that right do you start to shape your piece of wood.

The carver then works his block with his plan alongside it. He cuts those bits of wood away that he doesn't want, and shapes what's left until it ever more closely resembles that original plan.

Only when the design on the wood and the paper plan are identical has the carver finished his job. He's then made exactly what he'd hoped for, while

working all along from that original plan.

It's the same for our lives. God is the master carpenter. He has a unique plan for each one of us, which is a blueprint of what He hopes we will become.

As we go through life, God shapes us, cutting away those bits of us that He doesn't want and which would spoil what He hopes we'll come to look like. He then gradually moulds what's left until we look ever more like that original blueprint. Only when the two are identical will God's work be over.

But there's one big difference between a human being and a block of wood. A block of wood sits impassively on the carver's bench while he works at it. The wood cannot help the process

along and has no idea what's happening to it.

God very much hopes that we'll help Him in the process of being moulded and shaped into His pattern. That's why we read the Bible and worship and pray: to find out just what His plan is for each one of us. Only when we have some idea of what He wants us to be can we help Him in the process.

**Parish Pump** †



# Thorpe Card Making

Nine people joined us today for the first St Francis Saturday morning craft session. Some of us had a go at card making.

There was a table of cross stitch card makers, and another table was dabbling with paint.

The next crafting session will be on Saturday 15<sup>th</sup> February, and we still have two places left for these card making classes. Later in 2025 we intend to hold classes for macrame, weaving, and Dorset buttons etc.

Look out for further information!

**Jan Tetley** †

An example of the art produced during the morning craft session. More pictures from Jan Tetley on page 25



Image by Jan Tetley

# National Nest Box Week

Where can family-minded birds raise their young these days? As our gardens and parks become smaller and tidier, too many natural nest sites – such as holes in trees, old buildings and unkempt hedgerows – are rapidly disappearing

No wonder that our sparrows, greenfinches and swifts are in precipitous decline, and that one in four of our UK bird species are now under serious threat.

This makes it more important than ever to care for our remaining birds. By feeding, providing water and putting up nest boxes we can give them a safe space to raise their chicks.

The National Nest Box Week initiative encourages bird conservation across



Image by John Clarke

the UK, and it's easy to get involved, whether you're a teacher, part of a local wildlife group, or just wanting to boost the bird numbers in your own garden.



Link to the National Nest Box Week website

**Parish Pump** †

*Disturb Us, Lord*

Disturb us, Lord, when we are too well  
pleased with ourselves,  
When our dreams have come true  
Because we have dreamed too little,  
When we arrived safely  
Because we sailed too close to the shore.

Disturb us, Lord, when  
With the abundance of things we possess  
We have lost our thirst  
For the waters of life;  
Having fallen in love with life,  
We have ceased to dream of eternity  
And in our efforts to build a new earth,  
We have allowed our vision  
Of the new Heaven to dim.

Disturb us, Lord, to dare more boldly,  
To venture on wider seas  
Where storms will show Your mastery;  
Where losing sight of land,  
We shall find the stars.  
We ask You to push back  
The horizons of our hopes;  
And to push into the future  
In strength, courage, hope, and love.

**Attributed to Sir Francis Drake, 16<sup>th</sup> Century**

# Hair Today Gone Tomorrow

So many of you have kindly reached out and asked after Robert's hair adventures, and after a busy December we have an update for you all! I had hoped that an update could be in the January magazine, but I unfortunately missed the early publication just before Christmas...

At the time of writing this – 5<sup>th</sup> January 2025 – the hair remains untamed. We were all looking forward to the hair being cut on 20<sup>th</sup> December 2024 – the last Explorer meeting of 2024, and Robert was MORE than ready to be divested of his shaggy locks, but unfortunately, the hairdresser was unavoidably unavailable, so we came to watch Chris Cade instead (but that's a different story altogether!). One of the pictures accompanying this rambling were taken that night (thanks John!), so you can see its

length then – it's even longer and wilder now - ....

We spoke to the hairdresser at the beginning of January, to arrange a new date, and unfortunately, it transpires the hair is still not quite long enough for the big chop. The Hairdresser thinks it could still be a while yet...

Robert and I would like to offer our most heartfelt thanks for your generosity so far. However, due to the impact of recent health issues, in early December Robert came to the difficult conclusion that he will not be able to join his fellow Explorer Scouts in July. This was a decision made in his best interest, but a sad decision all the same. Robert's immediate thoughts were that he still wanted to donate his hair and, despite his immense disappointment, for his fellow Explorers. Robert would like to pass on the money he has raised

so far to his Explorer leaders to support other members of his group that may be struggling to raise the £1400 target required of each participant. We will also pass on part of the donations to the Princess Trust to further the incredible work they do for those experiencing hair loss. We do however also understand if you wish to have your donation returned, and encourage you to get in touch if this is the case.

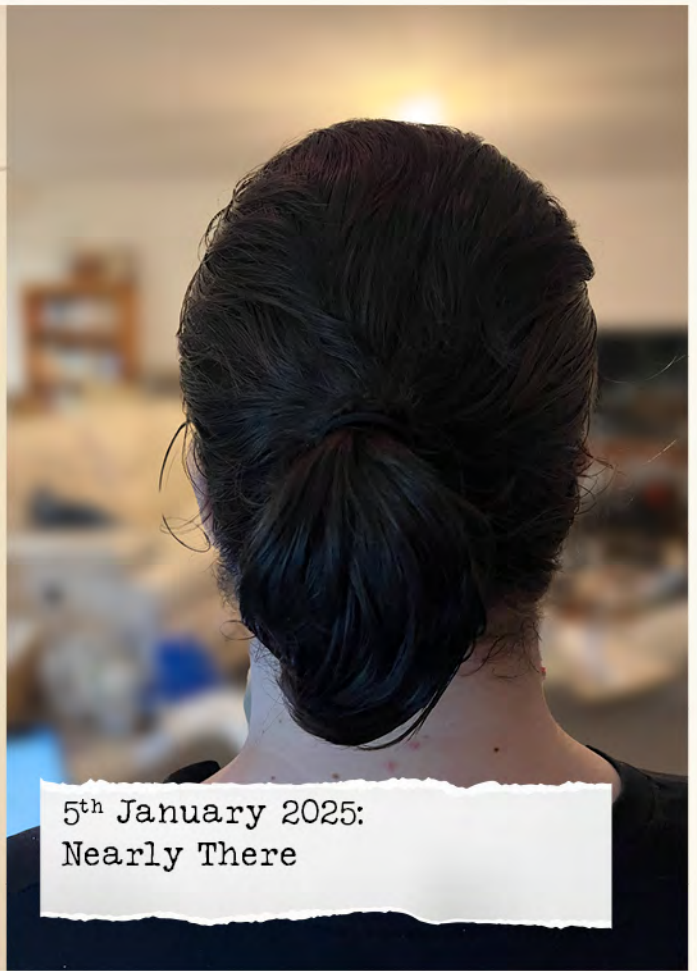
Once we have a date, I'll let you all know, but once again our most sincere thanks for all your support so far and your understanding of Robert's decision.

**Margaret & Robert Seager** †





23<sup>rd</sup> April 2024:  
Some Progress!



5<sup>th</sup> January 2025:  
Nearly There



20<sup>th</sup> December 2024:  
Following 'A Christmas Carol'

# What's the Big Idea - Job



Image by John Clarke

'Why does God allow suffering?' This is a frequently asked question of Christians, because we believe in a God who is both good and powerful and it is explored in the book of Job. This book is part of the wisdom literature, along with Proverbs, Ecclesiastes, and Song of Solomon.

Job was both wealthy and righteous, yet he experienced catastrophic suffering, losing all his wealth, children and health. This is portrayed as a result of Satan's challenge to God, testing whether Job's devotion to God was dependent on his circumstances or not.

The main body of the book (3:1-42:6) consists of dialogues between Job, his friends (Eliphaz, Bildad, and Zophar) and God. Job and his friends assume that

God is almighty and just, and that no human being is wholly innocent. In the three cycles of speeches they wrestle with the reasons for Job's suffering, remembering his morally upright character.

Finally, all are silenced by God, as He speaks Himself (chs 38-42). He points out that Job knows very little about the universe when he reflects on God's power. Job confesses his lack of understanding and weakness, but then goes on to confess his confidence and trust in God. This puts suffering in a right perspective. Job is not condemned, and the book ends with the restoration of his family and possessions.

The importance of this book is that it realistically addresses the painful questions of life, without

offering simplistic answers. It focuses on how we should respond to suffering, rather than on why God allows suffering:

'Naked I came from my mother's womb, and naked I shall depart. The LORD gave and the LORD has taken away; may the name of the LORD be praised.' (1:21)

**Canon Paul Hardingham** †



# Arts and Crafts



St Wilfrid's South East Elevation. Image by John Clarke

## Reflecting Faith: Church Buildings

We have been thinking about different aspects of church buildings. But what about 'the whole thing'? - the impression you have when you first see a church building?

Most of us have visited many church buildings, either to worship or as a tourist: to enjoy the splendour, the colours, the style and the architecture, with or without necessarily a time of prayer or worship.

There are some amazingly staggering designs around the world – one only has to think of the complex and intricate stone carving of Gaudi's catholic basilica in Barcelona, Spain (due to be completed next year!) and then

compare that to the sleekness of the Lutheran (Church of Iceland) parish church in Reykjavík, Iceland.

How about the grandeur of St Peter's in Rome, full of baroque gold and rich colours? Or what about St Basil's Cathedral in Red Square, Moscow – now a museum but topped with amazingly coloured onion domes?

Just looking at the outside of a building tells you a lot about what it is likely to be like inside, the purpose of the building and the style of worship to expect there.

It's not just about the condition of the fabric, or the tidiness of the grounds but rather the architecture itself.

When we see a contemporary modern

building, we will expect the worship to match it: whether that is Protestant, Catholic or any other denomination.

**Rev. Dr Jo White** †

## This month

If you were designing a brand-new church building today, what would you put into it and therefore what would the exterior look like? What would you want on the outside, to express your faith? Would you include any specific Christian symbols, or be more all-encompassing?

# PCC News

NEWS from YOUR  
Parochial Church  
Council (PCC)

This is an update from our  
last meeting which was  
held on Wednesday 15<sup>th</sup>  
January 2025.

## Rector Vacancy

A candidate will be  
interviewed on Monday  
20<sup>th</sup> January 2025. If the  
recruitment is successful,  
we have to wait for a  
Formal Notification of an  
Appointment from the  
Diocese. This will be read  
out on the date specified by  
the Diocese at the Sunday services  
at St Wilfrid's and St Francis.

In the meantime, we continue  
to rely on the support of our  
retired clergy.

Several members of the  
Church have also taken on extra  
responsibilities, requiring a lot of  
time and effort. Please continue to  
support these people as much as  
possible and be mindful that there  
will be some changes to services  
due to availability of clergy going  
forward until our new Rector is  
in post.

## Finance Update

**Accounts** - Mrs. J Clarke  
reported that the accounts for  
2024 are currently in preparation  
and once completed will be  
checked by our External Examiner.  
The accounts show that our  
income has decreased mainly due  
to a reduction in Planned Giving,  
and that in 2025 it is likely that we  
will need to dip into the Reserve  
Account to help fund our Freewill  
Giving. It is hoped that in 2025  
a Generous Giving Event can be  
held to increase planned giving.

The Trustees Annual Report



(TAR) for 2024 is at a very early  
stage. The TAR helps people  
(particularly potential external  
funders) to understand what our  
Charity does (St Wilfrid's is a  
Registered Charity), where the  
money comes from and how the  
Trustees (PCC) have spent the  
money in the past year.

**Legacies** – In December St  
Wilfrid's received two Legacies.  
One from the estate of Margaret  
Webster and the other from  
the estate of Alan Tomblin. The  
PCC Secretary is in contact  
with their executors and has  
expressed our grateful thanks  
for being remembered in the  
wills. Discussions are taking place  
as to how these legacies can be  
best used.

## Buildings Update

The Lightning Conductor  
maintenance has been completed  
and the branches on the trees  
damaged during last year's storms  
have been removed.

The QI (Quinquennial Report)  
has now been completed by our  
Architect. A meeting has been  
arranged for Feb 2025 to discuss

the issues raised.

## Worship & Prayer Update

Mrs. Sowden said that 1,148 adults  
and young people attended the  
school services in the run up  
to Christmas.

Mrs. Newsome advised that  
there will be changes to the  
Midweek Services in February  
and that the pattern is likely to  
continue through March. More  
information on Pew Sheets/  
*Connected*.

## Mission & Outreach Update

Mrs. Beevers advised that the Lay  
Ministry Team continues to visit  
and take Communion to previous  
members of the congregation.  
Mrs. Sowden added that services  
also continue at St Wilfrid's Court  
and Fernbank Court. Ms. Jackman  
also takes out Communion from  
St Francis when requested.

## Preparation of new Electoral Rolls 2025

Church Representation Rules  
require a new church electoral  
roll to be prepared for each parish  
in 2025. The new roll must be  
completed not less than 15 days



or more than 28 days before the Annual General Meeting (APCM).

This is a key year for people joining and rejoining the Roll as once certified at our APCM, these numbers will be used to determine the number of places our parish will have on Deanery Synod when the Deanery Synod elections are held in 2026.

If you want to be on the roll, please complete Form I, printed copies of which will be available in church from the beginning of February; they are also available on the York Diocesan website. Forms can be handed or emailed to Margaret Seager our Electoral Roll Officer or placed in a box

at the back of Church. At St Francis, return forms to Shirley Croft (Electoral Roll Officer for St Francis) Tel: 01757 707380.

If you require any help with completing the Form, please email [margemcb@hotmail.com](mailto:margemcb@hotmail.com), phone 07840 817005 or contact me, Ruth Breeze, PCC Secretary. Members of the Lay Ministry Team will also take Forms out with them when they do home visits & communions, and can assist with the completion of the Form.

**Completed forms must be returned by Sunday 30<sup>th</sup> March 2025.**

### Annual Parochial Church Meeting(APCM)

This will be held on Sunday 27<sup>th</sup> April, at approx. 12 noon, in the Parish Hall, following the morning service at St Wilfrid's

**Ruth Breeze** †

PCC Secretary.  
[ruthie5611@hotmail.com](mailto:ruthie5611@hotmail.com)

---

## Bah Humbug!

Taking on the roll of Queen Victoria was probably the last thing on the minds of the audience who attended St Wilfrid's to see Chris Cade's performance of Dicken's *A Christmas Carol*. And yet this was only one of the many examples of audience participation!

Chris's adaptation of Dickens' classic tale was first performed in St. Wilfrid's 25 years ago in December 1999, and it was a delight to welcome him back.

Around 50 people turned out to see this fully costumed one-man adaptation. By turn Chris astonished and delighted us as we were taken through Ebenezer Scrooge's reminder of Christmases past & present, and the effect that his behaviour would have on Christmases to come.

In the end, of course, Ebenezer finds redemption in the form of the largest turkey in the butcher's shop! And in the renewed love of his family and acquaintances - they, and we, can all celebrate Christmas together. As Tiny Tim said " God bless us every one!"

**John Clarke** †



Chris as Ebenezer Scrooge. Image by John Clarke

# Prayer for the New Year

Dear Lord,  
We begin a New Year! We all have hopes, expectations, fears and uncertainties, as we move into 2025 – already a quarter of the way through this new century!

We can't know what will happen in the world, in our country, in our lives during this year, but we come before You, thankful that if we put our trust in Jesus and what He achieved on the cross, we need not be afraid; we are safe and secure.

He takes all our hopes and fears and gives us His Peace and His Spirit in return, to sustain and equip us this New Year and always.

Thank you, gracious Father.

Thank you, Lord of all the years.

In Jesus' name, Amen.

**Nigel Beeton**

## From the Parish Registers

### Church Floodlights      Baptisms

St Wilfrid's Church was illuminated on:  
**6<sup>th</sup> November**

In Loving Memory of Eric Chilvers

**17<sup>th</sup> January**

In Loving Memory of Brian Hirst

**18<sup>th</sup> January**

In Loving Memory of Ann Callon

**19<sup>th</sup> January**

In Loving Memory of Allen Webster  
Fryer

We welcome into the Christian Family:

**5<sup>th</sup> January**

Frankie Alexander McCarthy

**19<sup>th</sup> January**

Ruairi Hoop

If you would like the church illuminated to celebrate a birth, baptism, birthday, marriage, anniversary, or the life of a loved one please contact Pat Griffiths on 01757 705793

## Methodist Clergy

**Brayton and Burn Methodist Ministers**

Rev. Christine Gillespie

[gillespiec39@gmail.com](mailto:gillespiec39@gmail.com)

(01977 682695)

**"Nations which went down  
fighting rose again, but those  
which surrendered tamely  
were finished"**

**Winston Churchill**

***Russia invaded Ukraine three years ago this month  
(24th February 2022)***

# St Wilfrid's, Clergy & Officers

## Clergy

Rev. Roy Shaw revroyshaw@protonmail.com  
 Rev. Paul Finlinson p.finlinson@outlook.com

## Reader

Jackie Jackman porgles.pogs@icloud.com (01757 706475)

## Church Warden (Currently Vacant)

Ruth Breeze point of contact (01757 701911)

## Ministry Team

Mel Allan (01757 706068)  
 Lynn Allan (01757 706068)  
 Sue Beevers (01757 229515)  
 Pat Griffiths (01757 705793)  
 Joan Howden (01757 700942)  
 Sheila Newsome (01757 705497)  
 Carol Sowden (01757 703590)

## Electoral Roll Officer

Margaret Seager (07840 817005)

## Parish Safeguarding Representative

Linda Bunn

## Pastoral Care

Sue Beevers (01757 229515)

## Craft Group

June Whitehouse (01757 704331)

## Mothers Union

Lynn Allan (01757 706068)

## Book Club

Rosalind Wilson (01757 708856)

## Sacristan

Sheila Newsome (01757 705497)

## Officers

### PCC Secretary

Ruth Breeze (01757 701911)  
 ruthie5611@hotmail.com

### Treasurer

Jill Clarke (01757 708646)

Registered Charity Number 1169956

# St Francis' Clergy & Officers



## Clergy. Thorpe Willoughby Methodist/Anglican Church

Rev. Christine Gillespie gillespiec39@gmail.com (01977 682695)  
 Rev. Roy Shaw revroyshaw@protonmail.com  
 Rev. Paul Finlinson p.finlinson@outlook.com

(The Revds. Roy Shaw and Paul Finlinson have the Archbishop's permission to officiate and we are very grateful for their help in the parish)

## Reader

Jackie Jackman (01757 706475) porgles.pogs@icloud.com

## Officers

### ECC Secretary

Jan Tetley (01757 707987)  
 tetleyjan@gmail.com

### Child Protection Representative

Jan Tetley (01757 707987)  
 tetleyjan@gmail.com

### Treasurer

Maggie Beal (01757 703892)

### Church Coordinator

Shirley Croft (01757 707380)  
 Rosemary Finlinson

### Electoral Roll Officer

Shirley Croft (01757 707380)

# Service Roster for February

## St Wilfrid's

### Sunday 2<sup>nd</sup> February

#### Candlemas

10:30am Lay led Morning Prayer

12:30pm Baptisms

### Tuesday 4<sup>th</sup> February

10:30am Holy Communion at

**Fernbank Court**

### Wednesday 5<sup>th</sup> February

9:30am Holy Communion

### Sunday 9<sup>th</sup> February

#### Fourth Sunday before Lent

8am Holy Communion

10:30am Holy Communion

### Monday 10<sup>th</sup> February

10:30am Holy Communion at

**St Wilfrid's Court**

### Wednesday 12<sup>th</sup> February

9:30am Lay led Morning Prayer

### Sunday 16<sup>th</sup> February

Third **Sunday** before Lent

10:30am Joint Celtic Communion at

**St Francis'**

### Wednesday 19<sup>th</sup> February

9:30am Holy Communion

### Sunday 23<sup>rd</sup> February

#### Second Sunday before Lent

8am Holy Communion

10:30am Holy Communion with Prayer

for Healing

### Wednesday 26<sup>th</sup> February

9:30am Lay led Morning Prayer

## St Francis

### Sunday 2<sup>nd</sup> February

#### Candlemas

10:30am Holy Communion with

Prayer for Healing

### Thursday 6<sup>th</sup> February

10am Lay led Morning Prayer

### Sunday 9<sup>th</sup> February

#### Fourth Sunday before Lent

10:30am Methodist led Morning

Worship

### Thursday 13<sup>th</sup> February

10am Holy Communion

### Sunday 16<sup>th</sup> February

Third **Sunday** before Lent

10:30am Joint Celtic Communion

at **St Francis'**

### Thursday 20<sup>th</sup> February

10am Lay led Morning Prayer

### Sunday 23<sup>rd</sup> February

#### Second Sunday before Lent

10:30am Lay led Morning Prayer

### Thursday 27<sup>th</sup> February

10am Holy Communion

## Methodists

### Brayton

#### Sunday 2<sup>nd</sup>

10:30am Morning Worship

#### Sunday 9<sup>th</sup>

10:30am United Covenant

Service with Burn and

Hambleton

#### Sunday 16<sup>th</sup>

10:30am United Service at Burn

#### Sunday 23<sup>rd</sup>

10:30am United Service at

Hambleton

### Burn

#### Sunday 2<sup>nd</sup>

10:30am Morning Worship

#### Sunday 9<sup>th</sup>

10:30am United Covenant

Service at Brayton

#### Sunday 16<sup>th</sup>

10:30am United Service with

Brayton and Hambleton

#### Sunday 23<sup>rd</sup>

10:30am United Service at

Hambleton

### Thorpe Willoughby

#### Sunday 9<sup>th</sup>

10:30am Morning Worship



## Coffee Corner

**Saturday 1<sup>st</sup> February**  
**10am - 11:15am**  
**St Francis Church**

Everyone welcome to join us for Coffee, Cake and Convivial Company. **Pat**

## Community Lunch

**Wednesday 5<sup>th</sup> February**  
**12noon-1:30pm**  
**St Wilfrid's Parish Hall**

After the Christmas & New Year, we return in February with a simple lunch of soup & dessert with custard for only £5 **Pat**

## Tea@Two

**Thursday 27<sup>th</sup> February**  
**2pm-4pm**  
**St Wilfrid's Parish Hall**

An afternoon of coffee, tea, cake and chat. Tickets only £7. **Pat**

## Coffeemates

**Wednesday 26<sup>th</sup> February**  
**10am - 12noon**  
**St Wilfrid's Parish Hall**

Join us for tea, coffee and fantastic homemade cakes in February!  
**Lynn**

## Coffee for All

**Every Tuesday**  
**10am-11:30am**  
**St Francis Church**

Come along for coffee, tea and a chat. Everyone is welcome.  
**Pauline**

## Craft Group Coffee Morning

**Saturday 8<sup>th</sup> February**  
**10am - 11:30pm**  
**St Wilfrid's Parish Hall**

A warm welcome awaits you with good company, coffee and cakes. We hope to see you there! **June**

# Wellbeing

## Methodist Church Coffee Morning

**Saturday 22<sup>nd</sup> February**  
**10am-11:30am**  
**Brayton Methodist Chapel**

The proceeds from our next coffee morning will go to local charity Dementia Forward.  
**Lorraine**

## Soup and a Song

**Friday 28<sup>th</sup> February**  
**10:30am-1pm**  
**St Francis Church**

Memory letting you down? Caring for someone with memory problems? Lonely or know someone who is? Enjoy a good sing-song? Join our happy group for an hour of song & fun, then share a meal of soup, butties and cake. 07921255988. **Rosemary**

## Churchyard Tidying

**Saturday 22<sup>nd</sup> February**  
**9:30am-12noon**  
**St Wilfrid's Churchyard**

Come and help maintain the flower borders, cut back the brambles, and empty the rubbish bins! Live the dream! **John**

# Crafty Folks

## St Wilfrid's Craft Group

Tuesday 11<sup>th</sup> February  
2pm-4pm  
St Wilfrid's Parish Hall

Everyone welcome, come along for good company and a cuppa. You may learn a new craft! **June**

## St Wilfrid's Stitchers Group

Monday 24<sup>th</sup> February  
1:30pm  
St Wilfrid's Parish Hall

We meet on the last Monday in the Month. We enjoy any type of sewing, cross stitch, and embroidery of any kind, as well as patchwork. All welcome, further details from 01757 705793. **Pat**

## St Francis Crafters

Every Wednesday  
2pm-4pm  
St Francis Church

We meet every Wednesday to knit, sew, crochet, craft and natter. Everyone is welcome! Or come along if you just want to chat! Contact me for more information on 01757 703892. **Margaret**

# Women Matters

## Mothers' Union

Thursday 13<sup>th</sup> February  
From 2pm  
St Wilfrid's Parish Hall

Our speaker will be Mike Beresford about the Zambesi Mission. **Lynn**

## Brayton WI

Monday 10<sup>th</sup> February  
From 2pm  
St Wilfrid's Parish Hall

The speaker at our February meeting will be John Ridley on the subject of *Tales of a Village Headmaster*. 01757 702209 for more information. **Jean**

## Thorpe WI

Thursday 13<sup>th</sup> February  
7:30pm  
St Francis' Church

At our next meeting Commissioners Dorita & John Wainwright will speak about the history of Salvation Army. **Jan**

# Camera, Action!

## Film Afternoon

Saturday 8<sup>th</sup> February  
From 1:30pm  
St Francis Church

A showing of a spiritual film with coffee, cake and a discussion afterwards. The film is a conversation between a man and 3 'people' who form the Holy Trinity. **Jan**

## Cake, Coffee, Movie

Friday 21<sup>st</sup> February  
10am - 12noon  
St Francis Church

We encourage people to come along and socialise over coffee & cake. Doors open at 10am with lots of refreshments followed by the film starting at 10.30am. **Jan**



# St Wilfrid's Notices

## **York Minster Passes**

the 2025 passes are now available to borrow. Any member of the Parish can visit the Minster for free with one of the Minster Passes.

**Ruth Breeze**

## **Connected Stapling**

We are running short of people to help staple *Connected* each month. As a rule collating and stapling takes place on the Thursday before the last Sunday of the month, at 2pm in the Parish Hall. The work usually takes 30 minutes dependent on how many people turn up to help. If you feel you have the time to help at 2pm please telephone me on 01757 704331.

**Richard Whitehouse**

## **Welcomers Needed!**

We are short of people to welcome folk into Church during Sunday morning services. If you are interested please speak to me, or Anne Whike, in Church.

**Ruth Breeze**

# St Francis' Notices

## **Coffee, Cake and Movie @ St Francis**

3<sup>rd</sup> Friday in each month: next showing 21<sup>st</sup> February. Doors open at 10am with lots of refreshments followed by the film starting at 10.30am.

We encourage people to come along and socialise over coffee & cake. The Community Cinema is for everyone, and particularly people on their own, or those with health issues, mobility, frailty or dementia & those that support them. Why not come along and join us!

Contact me on (01757) 707987, or tetleyjan@gmail.com for more details.

**Jan Tetley**

## **Card Making Workshop**

15<sup>th</sup> February, St Francis Church, Thorpe Willoughby. The workshop will consist of making cards after watching a tutorial video. Materials and refreshments provided. Tickets £5: contact me on (01757) 707987, or tetleyjan@gmail.com.

**Jan Tetley**

## **Soup and a Song at St Francis**

Last Friday in the month. The next Soup and a Song will be on Friday 28<sup>th</sup> February, 10:30am–1pm in St Francis Church. Is your memory letting you down? Or do you care for someone with memory problems? Are you in need of company, or know of someone who is lonely? Enjoy singing?

Join our happy group for an hour of song & fun, then share a meal of soup, butties and cake. Telephone me for more information on 07921 255988.

**Rosemary Finlinson**



# #TheParishThisMonth (Continued)



Thanks to Jan Tetley for these pictures of the Card Making Workshop held on 18<sup>th</sup> January in St Francis Church. The next Card Making morning will be held on Saturday 15<sup>th</sup> February. Contact Jan ((01757)

707987, or tetleyjan@gmail.com) for more information and to book a place.

**John Clarke** †

CÔME AĀLONG TO

C MATES CFFEE

WEDNESDAY 26TH FĒBRUĀRY

FROM 10AM TILL 12NŌŌN

IN ST WĪLFŘID'S PĀRISH HĀĀL,

CŌFFĒE, CĀKE &  
GRĒAT COMPĀNY!

# Community Lunch!



Wednesday 5th February  
12noon to 1:30pm in the  
Parish Hall. Enjoy good  
company plus soup and  
dessert for only £5

**COMMUNITY CINEMA PRESENTS**

# **COFFEE CAKE & MOVIES**

**Screenings at the Church of  
St Francis Fox lane,  
Thorpe Willoughby**

**Third Friday every month  
Doors open 10am;  
Film at 10:30am**

**Next Show Friday 21st February**

**Contact Jan on 01757 707987 or  
[tetleyJan@gmail.com](mailto:tetleyJan@gmail.com) for more details**

# **SOUP AND A SONG**

*at St Francis*

**Memory letting you down?  
Caring for someone with  
memory problems? Enjoy a good  
sing-song? Why not join our  
happy group for an hour of song  
& fun, then share a meal of soup,  
butties and cake.**

**Call Rosemary for more  
information 07921255988**

**Last Friday in the month  
10:30am-1pm  
St Francis Church,  
Thorpe Willoughby**